

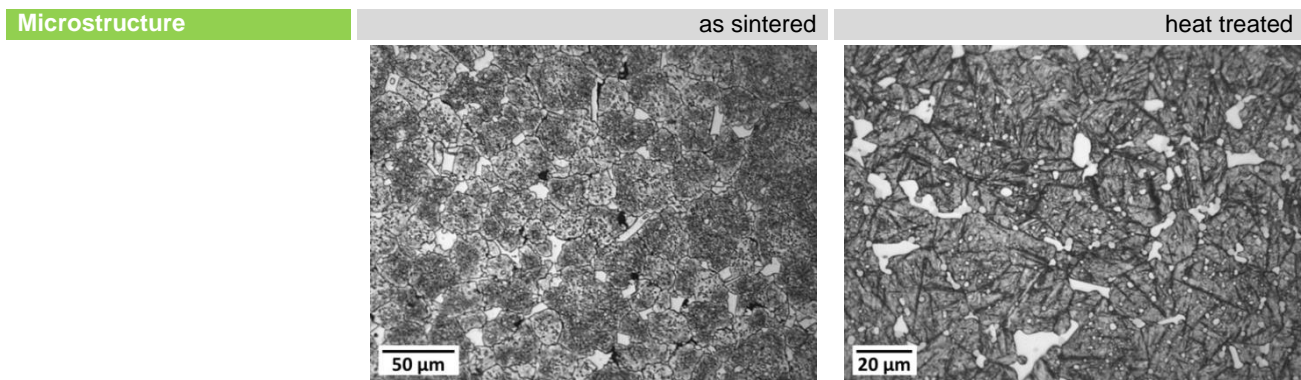
Data Sheet — M2

for technical applications

Comparable Standards	DIN 1.3342	AISI M2 (high C)	UNS T 11302
	-	-	

Composition	Fe	C	W	Mo	Cr	V	Si	Mn	Ni	others
min (wt.%)	-	0.9	5.5	4.5	3.75	1.7	-	-	-	-
max (wt.%)	Bal.	1.15	6.75	5.5	4.5	2.2	0.45	0.4	0.3	1.0

Typical Properties	Density	Hardness	R _m	R _{p0.2}	A ₁₀
	g/cm ³	HRC	MPa	MPa	%
as sintered	≥ 7.9	≥ 50	≥ 1050	≥ 800	≥ 1
heat treated		≥ 60			



Characteristics	high speed steel with high hardness and high wear resistance
-----------------	--

Typical Applications	versatile applications in machining industry: cutting, fine blanking, woodworking and cold work tools; taps and twist drills; lather tolls, planning knives etc.
----------------------	--

These data presented here are based on our current knowledge and experience, but no liability can be assumed.